

NEW: All products now in GROB **EXECUTIVE** color line

GROB

Willy Grob Ltd.

Alte Schmerikonstrasse 2
8733 Eschenbach SG
Switzerland

Phone +41 55 286 13 01

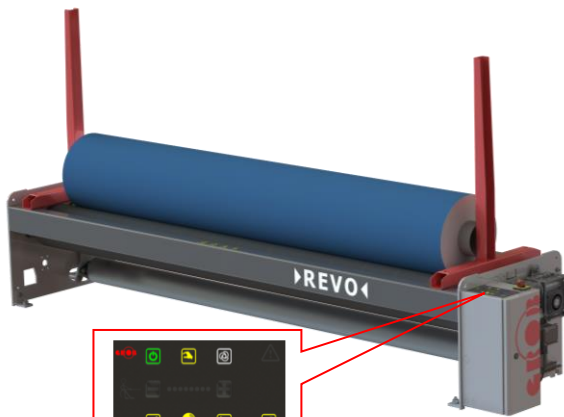
Fax +41 55 286 13 00

info@willy-grob.ch

www.willy-grob.ch



Range of products:



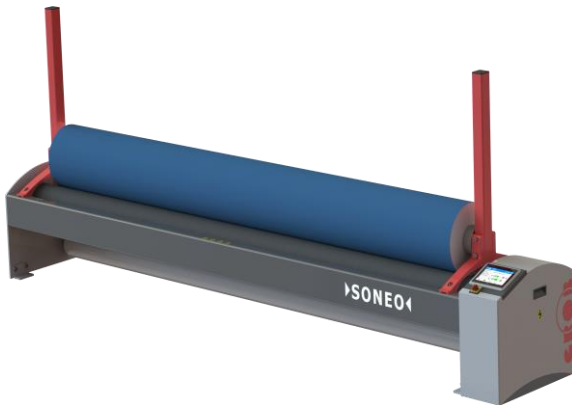
'FRITZPAD'

►REVO◄Leaf

- **Basic** tangential winder
- for fabrics of **mass production**
- D = 1'500mm, up to 2'500kg

NEW

- '**FRITZPAD**' - the intuitive LED-illuminated foil keypad
- Energy-Efficient-Engineering (E³)
- now up to **340cm**



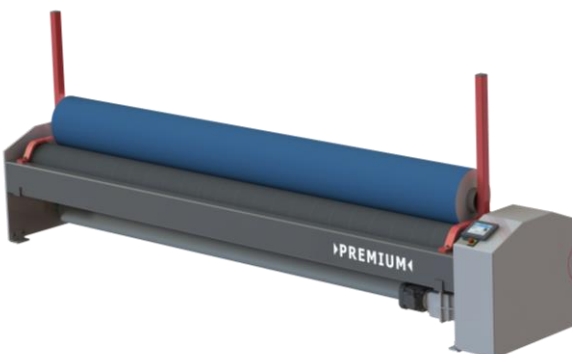
►SONEO◄

INDUSTRY 4.0

- **High-end** tangential winder
- for all cloth qualities, including **technical fabrics**
- D = 1'500mm, up to 3'000kg

NEW

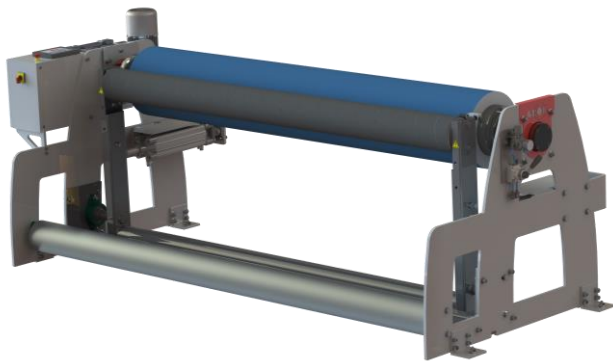
- Huge 7"-**Touch Screen** for perfect interaction
- '**SPEED DETECT & LIMIT**' - automatic fabric speed detection!
- Ready for '**UPC-UA'-communication** (Industry 4.0)
- Data logging
- Option: **Edge-Control** – ultra precise layer positioning



►PREMIUM◄Touch

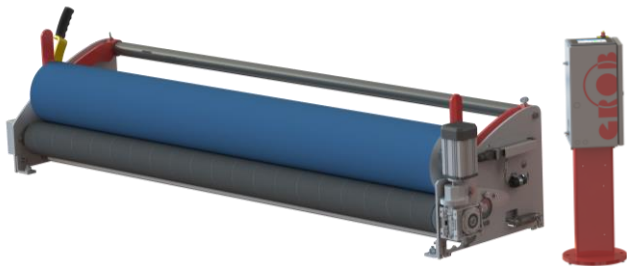
- **Heavy-duty** tangential winder
- up to **540cm** nominal width
- for winding of extra wide fabric
- D = 1'500mm, up to 3'500kg

Range of products:



► ZENTRO ◀ Touch

- High-end **AXIAL** winder
- up to **400cm** nominal width
- for delicate and **sensitive fabrics**
- D = 1'200mm, up to **2'000kg**
- for all type of weaving machines



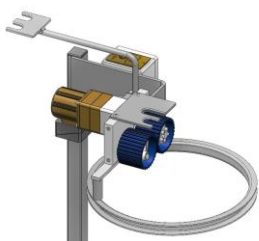
► InLoom ◀ Touch

- **COMPACT** tangential winder
- up to **360cm** nominal width
- fabric winding **INSIDE** of the **weaving machine**
- D = **500mm** [600mm], 1'200kg
- for all type of weaving machines



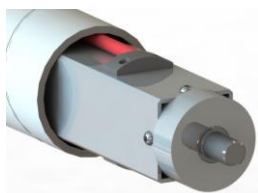
► RETRO ◀ Touch

- **UPGRADING set** for existing winders
- **universal** installation – with or without motor
- applicable on **all makes** - former Willy GROB units as well as many other brands
- Independent of nominal width
- Independent of diameter and weight



► KAZ ◀

Economical **disposal** of the cut-off **fringe selvedge**



► SQUARE ◀

Cardboard tube cloth rollers with self-acting clamping device

OPTIONS:

► **BULLDOG** ◀ - **Pressing** system solutions

- for additional weight on batch

► **VARIO** ◀ - **Inspection** table solutions **LED**

- straight | inclined | box | with/without light
- **'Shadowless'** execution **NEW**

► **ACCUMULO** ◀ - fabric **accumulating** systems

- cloth storage before inspection and winding

► **HEAT** ◀ - infrared **drying** application

- pre-drying of wet fabrics before winding

► **SCRATCH** ◀ - fabric **napping** unit

- rotating brush roller, allowing individual napping intensities